

# 1-BEDROOM + STUDY

## Type A1S

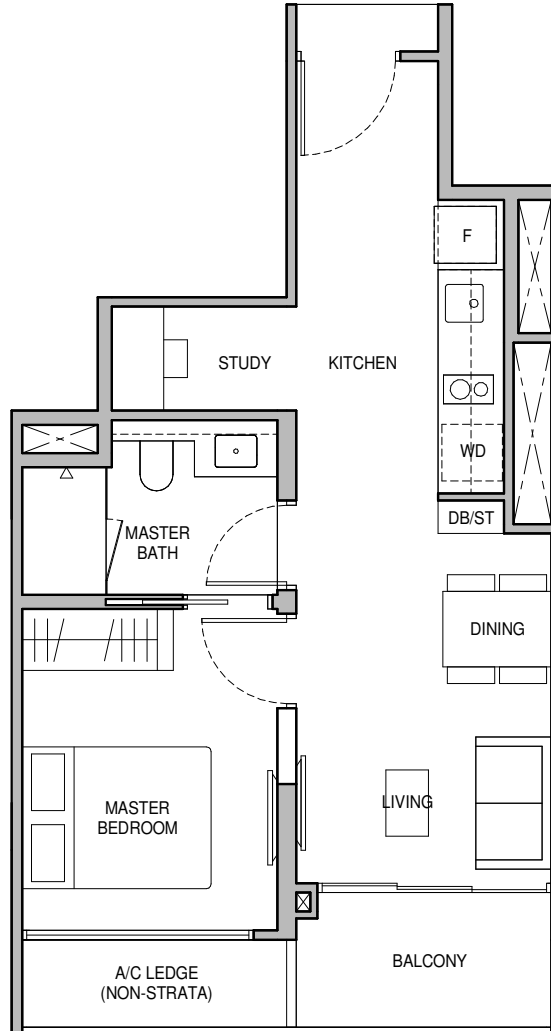
46 sq m / 495 sq ft

BLK 2 : #02-04 to #11-04  
 BLK 6 : #02-13\* to #11-13\*  
 BLK 10 : #02-28 to #11-28

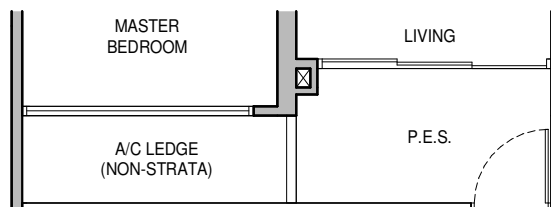
## Type A1S (P)

46 sq m / 495 sq ft

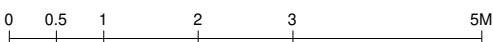
BLK 2 : #01-04



Type A1S (P)



- Wall not allowed to be hacked or altered
- P.E.S. - Private Enclosed Space
- WC - Water Closet
- DB/ST - Distribution Board/Storage
- F - Fridge
- TB Tall Boy
- WD - Washer Cum Dryer
- HS - Household Shelter
- RC - Reinforced Concrete
- A/C - Air-Conditioner
- \* Mirror Image



Area includes balcony and private enclosed space (PES) where applicable and excludes among others, the RC – Reinforced Concrete Ledge and A/C – Air Conditioner Ledge. The plans are subject to change as may be required by relevant authorities. All floor plans and areas are subject to final survey. The balcony shall not be enclosed unless with the approved balcony screen, more particularly illustrated under the header "Approved Balcony Screen". Please refer to the letter containing the Particulars, Documents and Information relating to the development and the unit for the floor plan relating to the unit you intend to purchase. The Sale and Purchase Agreement contains the entire agreement between the developer and the purchaser and supersedes and cancels in all respects all previous representations, warranties, promises, inducements or statements of intention, whether written or oral made by the developer and/or the developer's agent which are not embodied in the Sale and Purchase Agreement.



# 2-BEDROOM

## Type B1

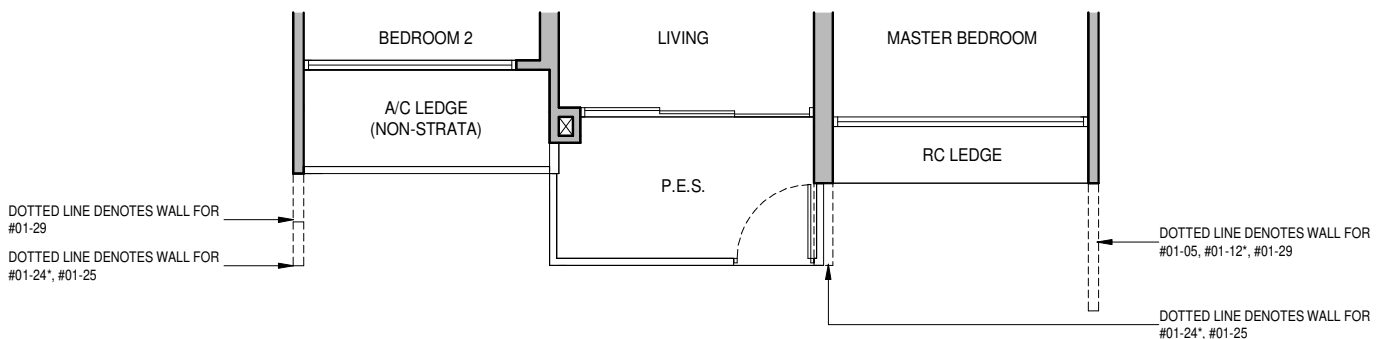
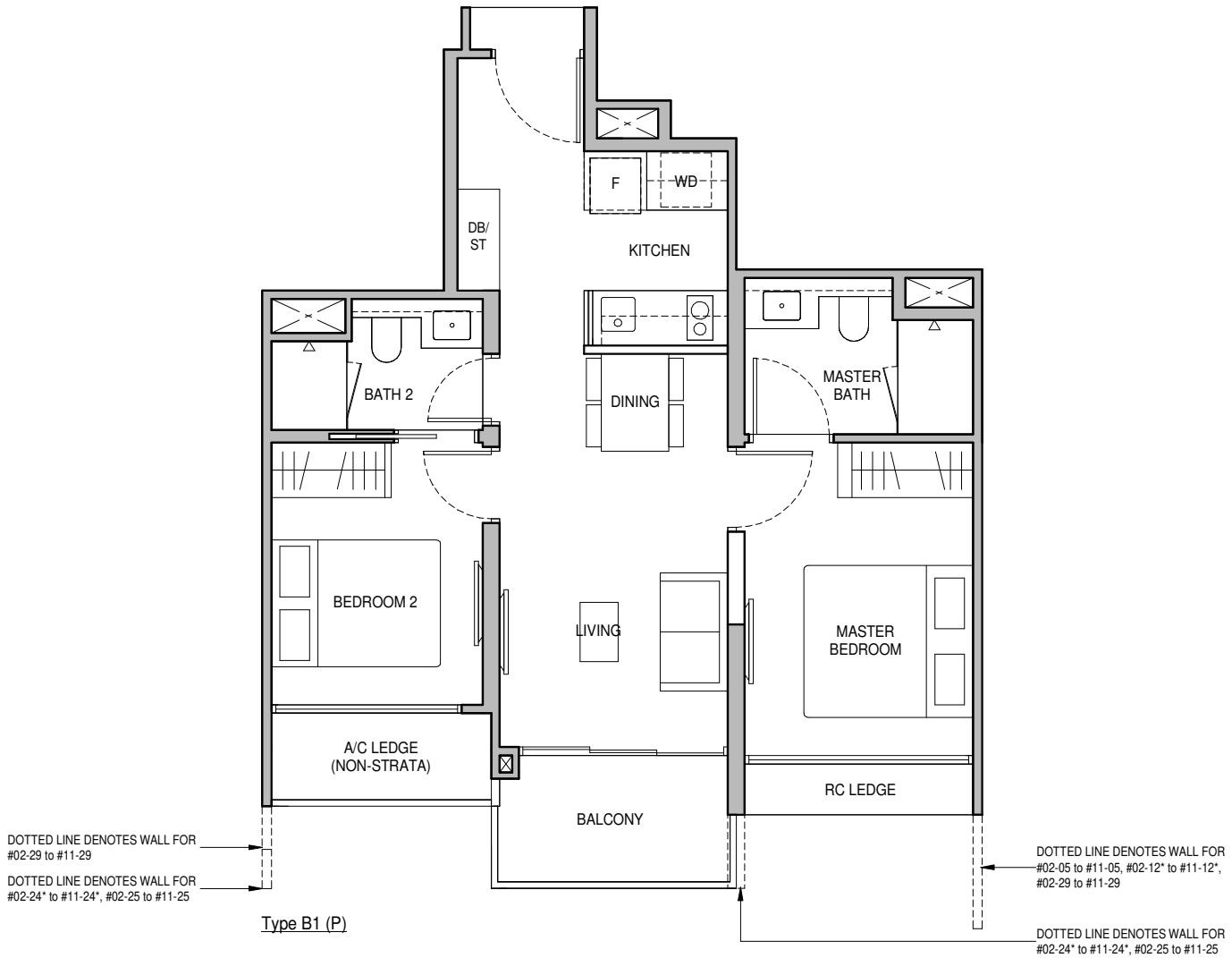
58 sq m / 624 sq ft

- BLK 2 : #02-05 to #11-05
- BLK 6 : #02-12\* to #11-12\*
- BLK 8 : #02-17 to #11-17, #02-24\* to #11-24\*
- BLK 10 : #02-25 to #11-25, #02-29 to #11-29,  
#02-32\* to #11-32\*

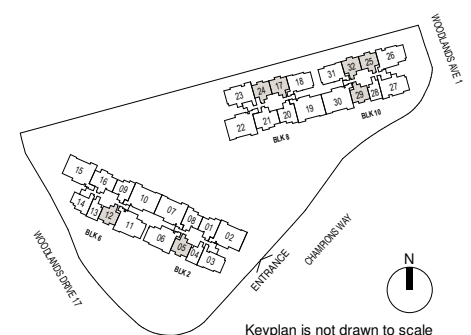
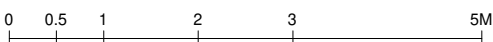
## Type B1 (P)

58 sq m / 624 sq ft

- BLK 2 : #01-05
- BLK 6 : #01-12\*
- BLK 8 : #01-17, #01-24\*
- BLK 10 : #01-25, #01-29, #01-32\*



- Wall not allowed to be hacked or altered
- P.E.S. - Private Enclosed Space
- WC - Water Closet
- DB/ST - Distribution Board/Storage
- F - Fridge
- TB Tall Boy
- WD - Washer Cum Dryer
- HS - Household Shelter
- RC - Reinforced Concrete
- A/C - Air-Conditioner
- \* Mirror Image



Area includes balcony and private enclosed space (PES) where applicable and excludes among others, the RC – Reinforced Concrete Ledge and A/C – Air Conditioner Ledge. The plans are subject to change as may be required by relevant authorities. All floor plans and areas are subject to final survey. The balcony shall not be enclosed unless with the approved balcony screen, more particularly illustrated under the header "Approved Balcony Screen". Please refer to the letter containing the Particulars, Documents and Information relating to the development and the unit for the floor plan relating to the unit you intend to purchase. The Sale and Purchase Agreement contains the entire agreement between the developer and the purchaser and supersedes and cancels in all respects all previous representations, warranties, promises, inducements or statements of intention, whether written or oral made by the developer and/or the developer's agent which are not embodied in the Sale and Purchase Agreement.

# 2-BEDROOM + ENSUITE STUDY

## Type B1S

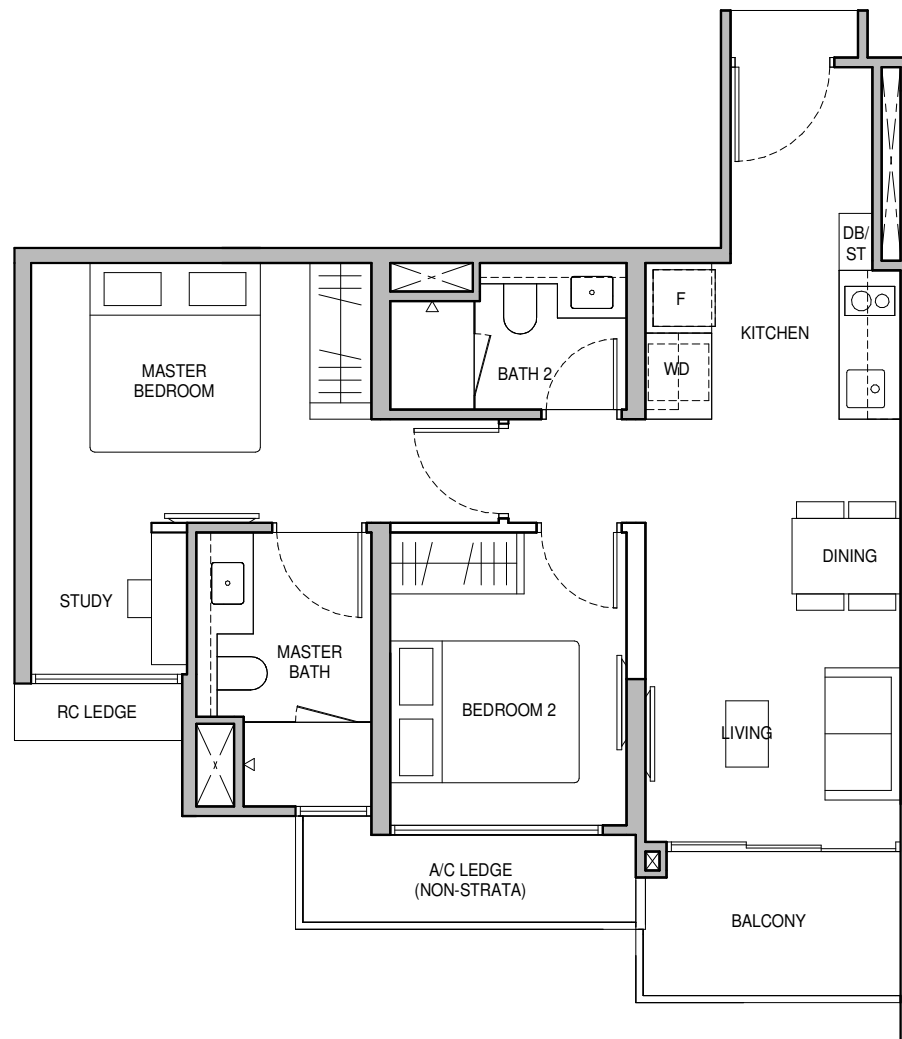
62 sq m / 667 sq ft

BLK 6 : #02-14 to #11-14

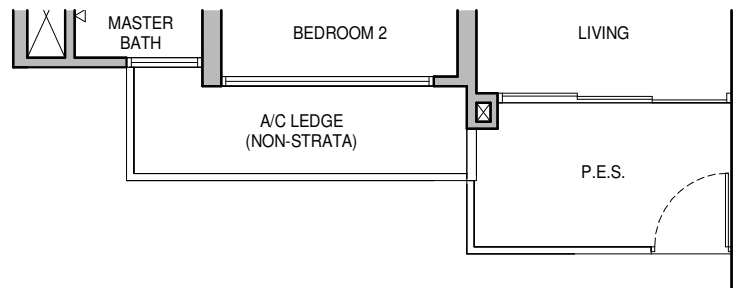
## Type B1S (P)

62 sq m / 667 sq ft

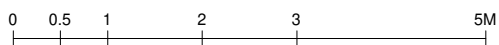
BLK 6 : #01-14



Type B1S (P)



- Wall not allowed to be hacked or altered
- P.E.S. - Private Enclosed Space
- WC - Water Closet
- DB/ST - Distribution Board/Storage
- F - Fridge
- TB Tall Boy
- WD - Washer Cum Dryer
- HS - Household Shelter
- RC - Reinforced Concrete
- A/C - Air-Conditioner
- \* Mirror Image



Area includes balcony and private enclosed space (PES) where applicable and excludes among others, the RC – Reinforced Concrete Ledge and A/C – Air Conditioner Ledge. The plans are subject to change as may be required by relevant authorities. All floor plans and areas are subject to final survey. The balcony shall not be enclosed unless with the approved balcony screen, more particularly illustrated under the header "Approved Balcony Screen". Please refer to the letter containing the Particulars, Documents and Information relating to the development and the unit for the floor plan relating to the unit you intend to purchase. The Sale and Purchase Agreement contains the entire agreement between the developer and the purchaser and supersedes and cancels in all respects all previous representations, warranties, promises, inducements or statements of intention, whether written or oral made by the developer and/or the developer's agent which are not embodied in the Sale and Purchase Agreement.



Keyplan is not drawn to scale

# 2-BEDROOM + STUDY

## Type B2S

66 sq m / 710 sq ft

BLK 2 : #02-01\* to #11-01\*, #02-08 to #11-08

BLK 6 : #02-09\* to #11-09\*

BLK 8 : #02-20 to #11-20

## Type B2S (P)

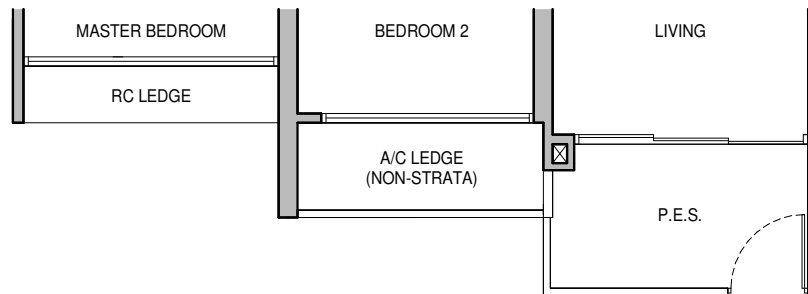
66 sq m / 710 sq ft

BLK 2 : #01-01\*, #01-08

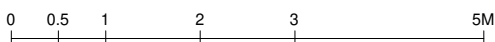
BLK 6 : #01-09\*



Type B2S (P)



- Wall not allowed to be hacked or altered
- P.E.S. - Private Enclosed Space
- WC - Water Closet
- DB/ST - Distribution Board/Storage
- F - Fridge
- TB Tall Boy
- WD - Washer Cum Dryer
- HS - Household Shelter
- RC - Reinforced Concrete
- A/C - Air-Conditioner
- \* Mirror Image



Area includes balcony and private enclosed space (PES) where applicable and excludes among others, the RC – Reinforced Concrete Ledge and A/C – Air Conditioner Ledge. The plans are subject to change as may be required by relevant authorities. All floor plans and areas are subject to final survey. The balcony shall not be enclosed unless with the approved balcony screen, more particularly illustrated under the header "Approved Balcony Screen". Please refer to the letter containing the Particulars, Documents and Information relating to the development and the unit for the floor plan relating to the unit you intend to purchase. The Sale and Purchase Agreement contains the entire agreement between the developer and the purchaser and supersedes and cancels in all respects all previous representations, warranties, promises, inducements or statements of intention, whether written or oral made by the developer and/or the developer's agent which are not embodied in the Sale and Purchase Agreement.



Keyplan is not drawn to scale

# 3-BEDROOM DELUXE

## Type C1

81 sq m / 872 sq ft

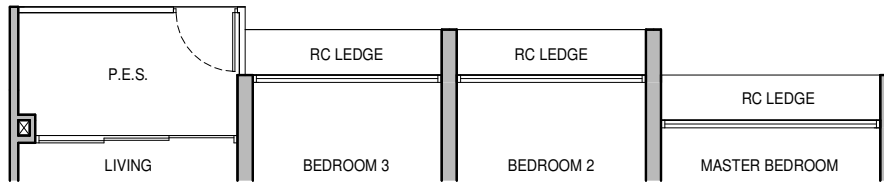
BLK 8 : #02-18 to #11-18  
 BLK 10 : #02-31\* to #11-31\*

## Type C1 (P)

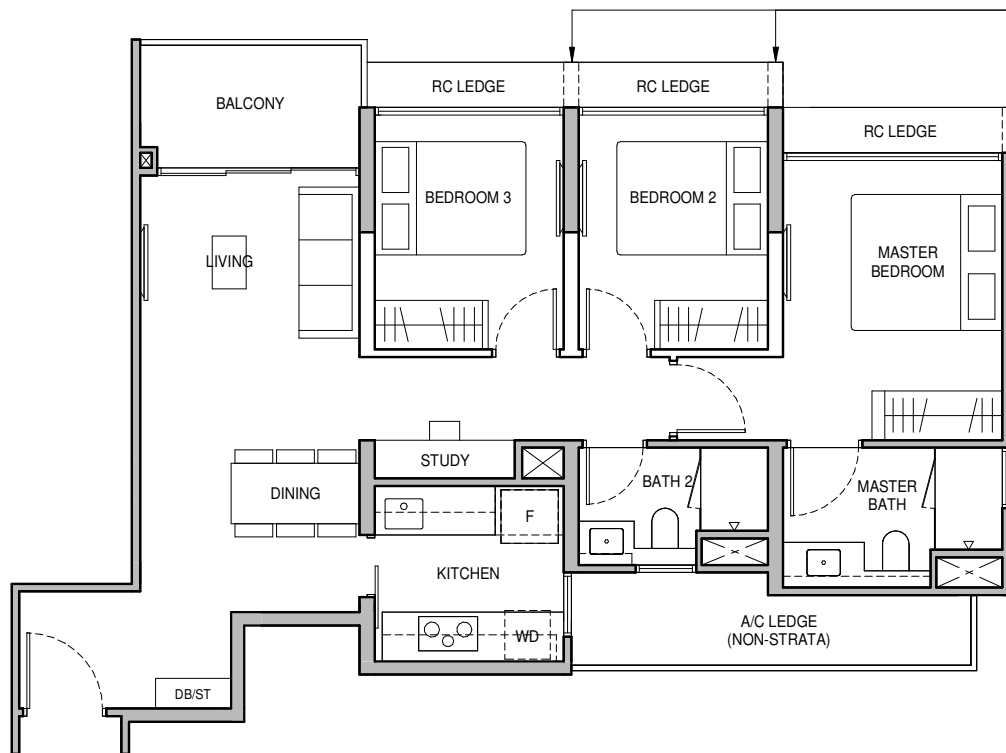
81 sq m / 872 sq ft

BLK 8 : #01-18  
 BLK 10 : #01-31\*

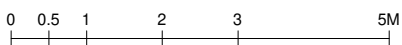
Type C1 (P)



DOTTED LINE DENOTES WALL FOR #02-18 to #10-18, #02-31\* to #10-31\*



- Wall not allowed to be hacked or altered
- TB Tall Boy
- Mirror Image
- P.E.S. - Private Enclosed Space
- WD - Washer Cum Dryer
- WC - Water Closet
- HS - Household Shelter
- DB/ST - Distribution Board/Storage
- RC - Reinforced Concrete
- F - Fridge
- A/C - Air-Conditioner



Area includes balcony and private enclosed space (PES) where applicable and excludes among others, the RC – Reinforced Concrete Ledge and A/C – Air Conditioner Ledge. The plans are subject to change as may be required by relevant authorities. All floor plans and areas are subject to final survey. The balcony shall not be enclosed unless with the approved balcony screen, more particularly illustrated under the header "Approved Balcony Screen". Please refer to the letter containing the Particulars, Documents and Information relating to the development and the unit for the floor plan relating to the unit you intend to purchase. The Sale and Purchase Agreement contains the entire agreement between the developer and the purchaser and supersedes and cancels in all respects all previous representations, warranties, promises, inducements or statements of intention, whether written or oral made by the developer and/or the developer's agent which are not embodied in the Sale and Purchase Agreement.



# 3-BEDROOM DELUXE

## Type C2

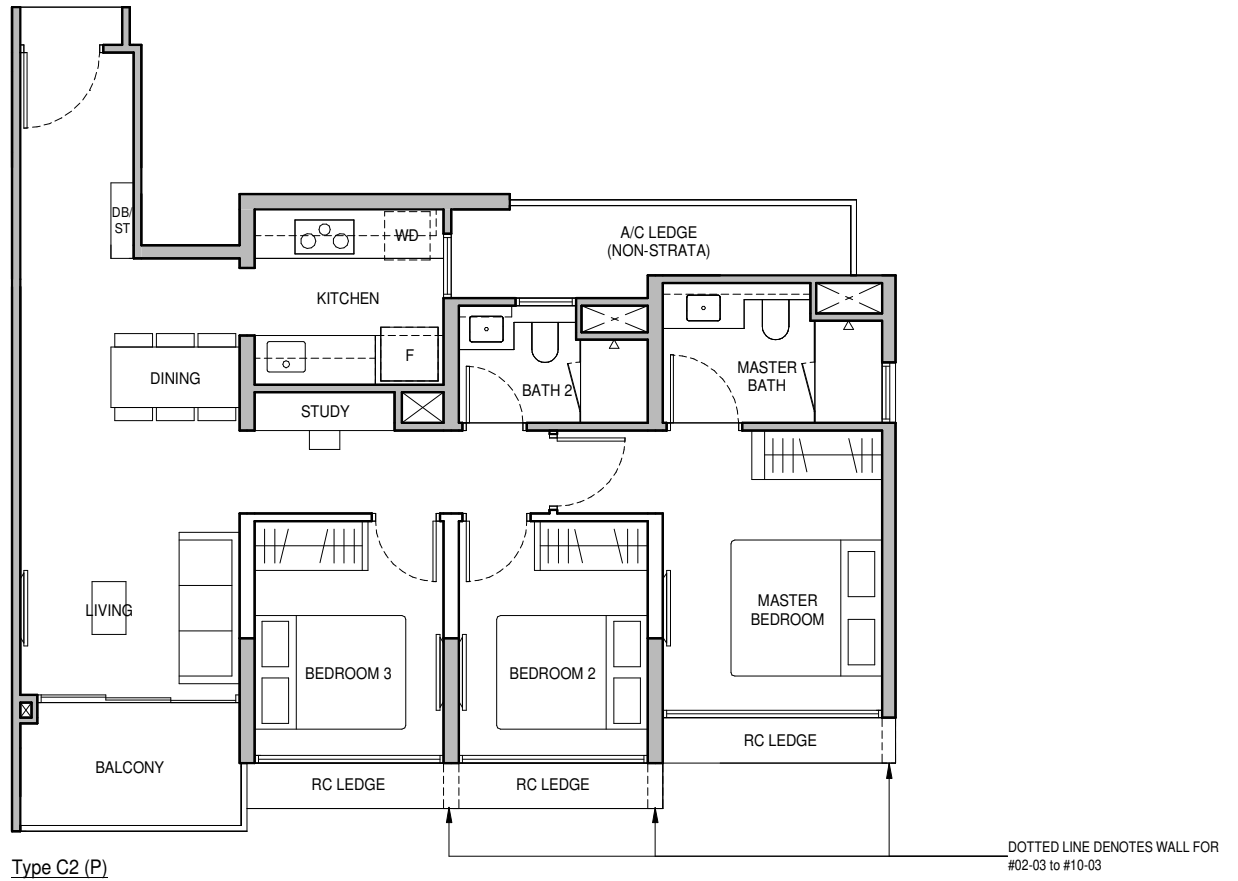
82 sq m / 883 sq ft

BLK 2 : #02-03 to #11-03

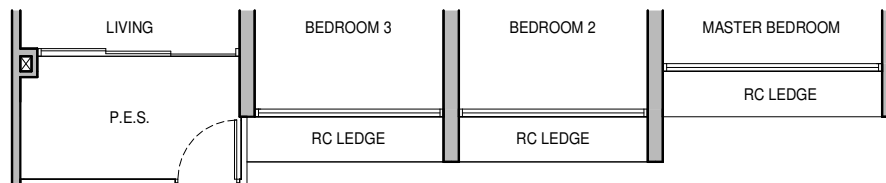
## Type C2 (P)

82 sq m / 883 sq ft

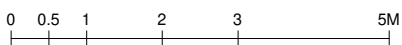
BLK 2 : #01-03



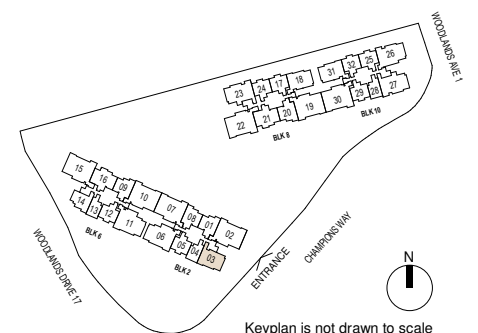
Type C2 (P)



- Wall not allowed to be hacked or altered
- TB Tall Boy
- Mirror Image
- P.E.S. - Private Enclosed Space
- WD - Washer Cum Dryer
- WC - Water Closet
- HS - Household Shelter
- DB/ST - Distribution Board/Storage
- RC - Reinforced Concrete
- F - Fridge
- A/C - Air-Conditioner



Area includes balcony and private enclosed space (PES) where applicable and excludes among others, the RC – Reinforced Concrete Ledge and A/C – Air Conditioner Ledge. The plans are subject to change as may be required by relevant authorities. All floor plans and areas are subject to final survey. The balcony shall not be enclosed unless with the approved balcony screen, more particularly illustrated under the header "Approved Balcony Screen". Please refer to the letter containing the Particulars, Documents and Information relating to the development and the unit for the floor plan relating to the unit you intend to purchase. The Sale and Purchase Agreement contains the entire agreement between the developer and the purchaser and supersedes and cancels in all respects all previous representations, warranties, promises, inducements or statements of intention, whether written or oral made by the developer and/or the developer's agent which are not embodied in the Sale and Purchase Agreement.



# 3-BEDROOM + STUDY

## Type C3S

84 sq m / 904 sq ft

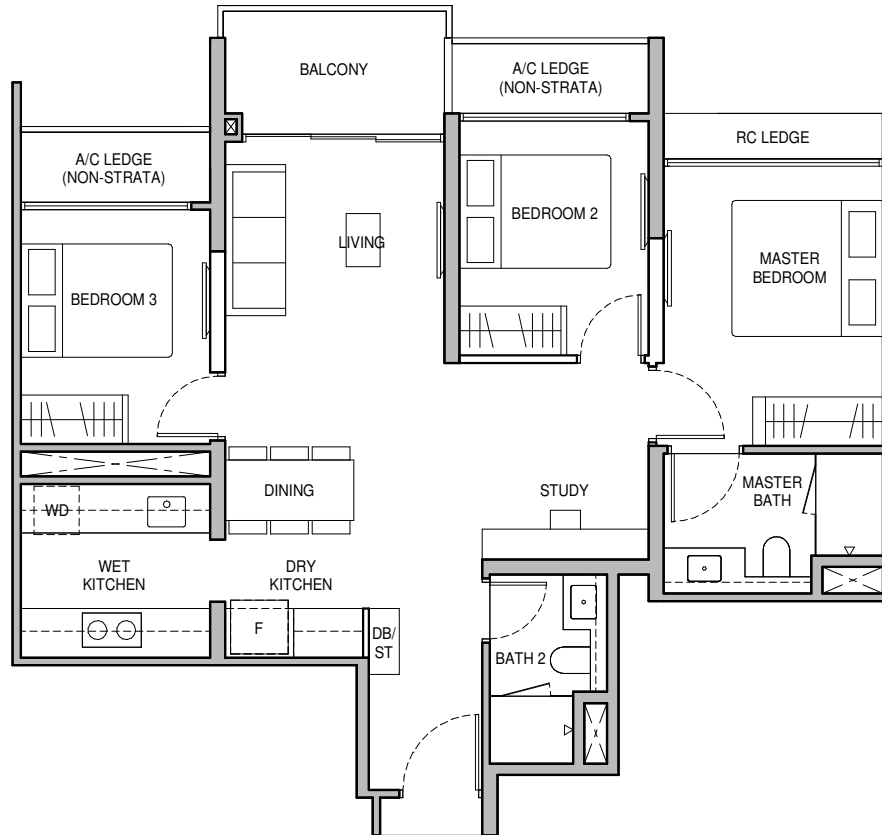
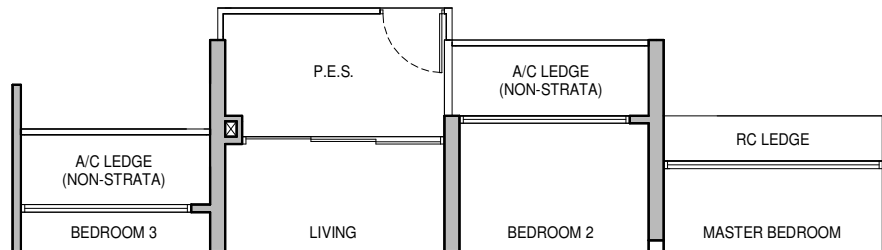
BLK 6 : #02-16 to #11-16  
 BLK 8 : #02-21\* to #11-21\*

## Type C3S (P)

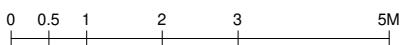
84 sq m / 904 sq ft

BLK 6 : #01-16  
 BLK 8 : #01-21\*

Type C3S (P)



- Wall not allowed to be hacked or altered
- TB Tall Boy
- Mirror Image
- P.E.S. - Private Enclosed Space
- WD - Washer Cum Dryer
- WC - Water Closet
- HS - Household Shelter
- DB/ST - Distribution Board/Storage
- RC - Reinforced Concrete
- F - Fridge
- A/C - Air-Conditioner



Area includes balcony and private enclosed space (PES) where applicable and excludes among others, the RC – Reinforced Concrete Ledge and A/C – Air Conditioner Ledge. The plans are subject to change as may be required by relevant authorities. All floor plans and areas are subject to final survey. The balcony shall not be enclosed unless with the approved balcony screen, more particularly illustrated under the header "Approved Balcony Screen". Please refer to the letter containing the Particulars, Documents and Information relating to the development and the unit for the floor plan relating to the unit you intend to purchase. The Sale and Purchase Agreement contains the entire agreement between the developer and the purchaser and supersedes and cancels in all respects all previous representations, warranties, promises, inducements or statements of intention, whether written or oral made by the developer and/or the developer's agent which are not embodied in the Sale and Purchase Agreement.



# 3-BEDROOM PREMIUM + STUDY

## Type C4PS

97 sq m / 1044 sq ft

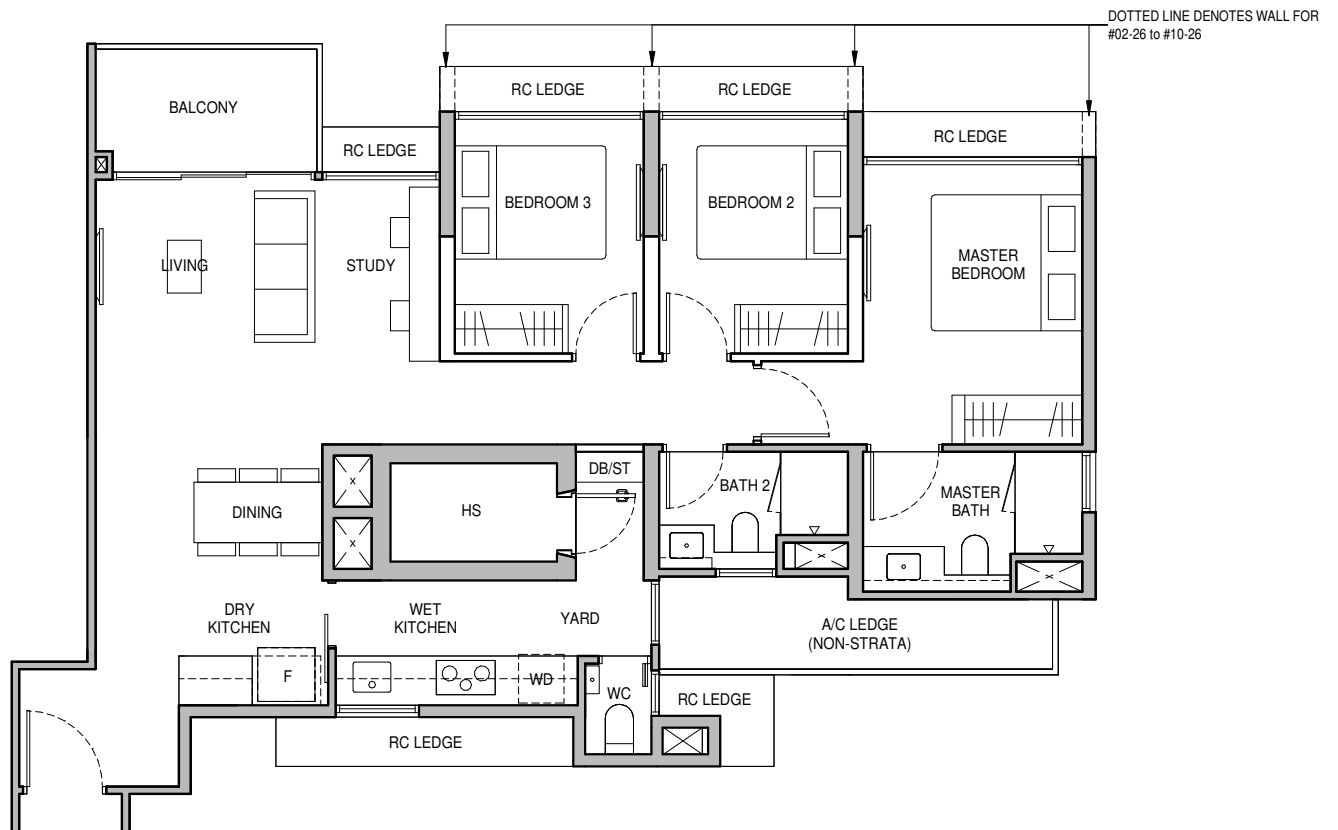
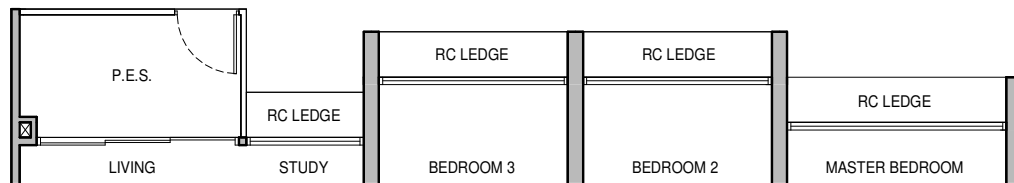
BLK 10 : #02-26 to #11-26

## Type C4PS (P)

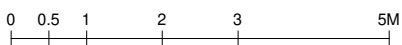
97 sq m / 1044 sq ft

BLK 10 : #01-26

Type C4PS (P)



- Wall not allowed to be hacked or altered
- TB Tall Boy
- Mirror Image
- P.E.S. - Private Enclosed Space
- WD - Washer Cum Dryer
- WC - Water Closet
- HS - Household Shelter
- DB/ST - Distribution Board/Storage
- RC - Reinforced Concrete
- F - Fridge
- A/C - Air-Conditioner



Area includes balcony and private enclosed space (PES) where applicable and excludes among others, the RC – Reinforced Concrete Ledge and A/C – Air Conditioner Ledge. The plans are subject to change as may be required by relevant authorities. All floor plans and areas are subject to final survey. The balcony shall not be enclosed unless with the approved balcony screen, more particularly illustrated under the header "Approved Balcony Screen". Please refer to the letter containing the Particulars, Documents and Information relating to the development and the unit for the floor plan relating to the unit you intend to purchase. The Sale and Purchase Agreement contains the entire agreement between the developer and the purchaser and supersedes and cancels in all respects all previous representations, warranties, promises, inducements or statements of intention, whether written or oral made by the developer and/or the developer's agent which are not embodied in the Sale and Purchase Agreement.



Keyplan is not drawn to scale



# 3-BEDROOM PREMIUM + STUDY

## Type C5PS

97 sq m / 1044 sq ft

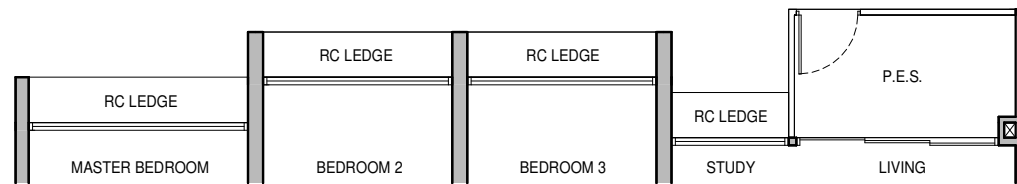
BLK 8 : #02-23 to #11-23  
BLK 10 : #02-27 to #11-27

## Type C5PS (P)

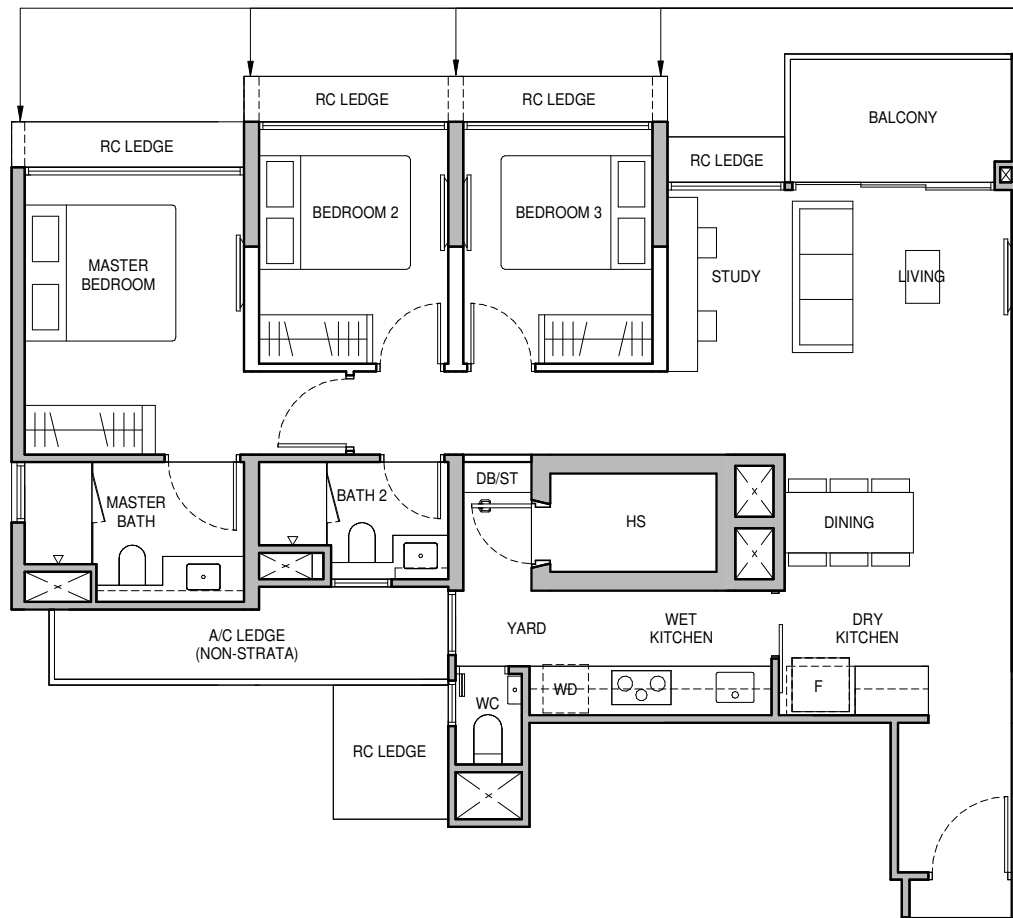
97 sq m / 1044 sq ft

BLK 8 : #01-23  
BLK 10 : #01-27

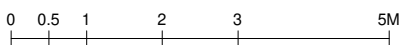
Type C5PS (P)



DOTTED LINE DENOTES WALL FOR #02-23 to #10-23, #02-27 to #10-27



- Wall not allowed to be hacked or altered
- P.E.S. - Private Enclosed Space
- WC - Water Closet
- DB/ST - Distribution Board/Storage
- F - Fridge
- TB Tall Boy
- WD - Washer Cum Dryer
- HS - Household Shelter
- RC - Reinforced Concrete
- A/C - Air-Conditioner
- Mirror Image



Area includes balcony and private enclosed space (PES) where applicable and excludes among others, the RC – Reinforced Concrete Ledge and A/C – Air Conditioner Ledge. The plans are subject to change as may be required by relevant authorities. All floor plans and areas are subject to final survey. The balcony shall not be enclosed unless with the approved balcony screen, more particularly illustrated under the header "Approved Balcony Screen". Please refer to the letter containing the Particulars, Documents and Information relating to the development and the unit for the floor plan relating to the unit you intend to purchase. The Sale and Purchase Agreement contains the entire agreement between the developer and the purchaser and supersedes and cancels in all respects all previous representations, warranties, promises, inducements or statements of intention, whether written or oral made by the developer and/or the developer's agent which are not embodied in the Sale and Purchase Agreement.



# 4-BEDROOM DELUXE + STUDY

## Type D1S

109 sq m / 1173 sq ft

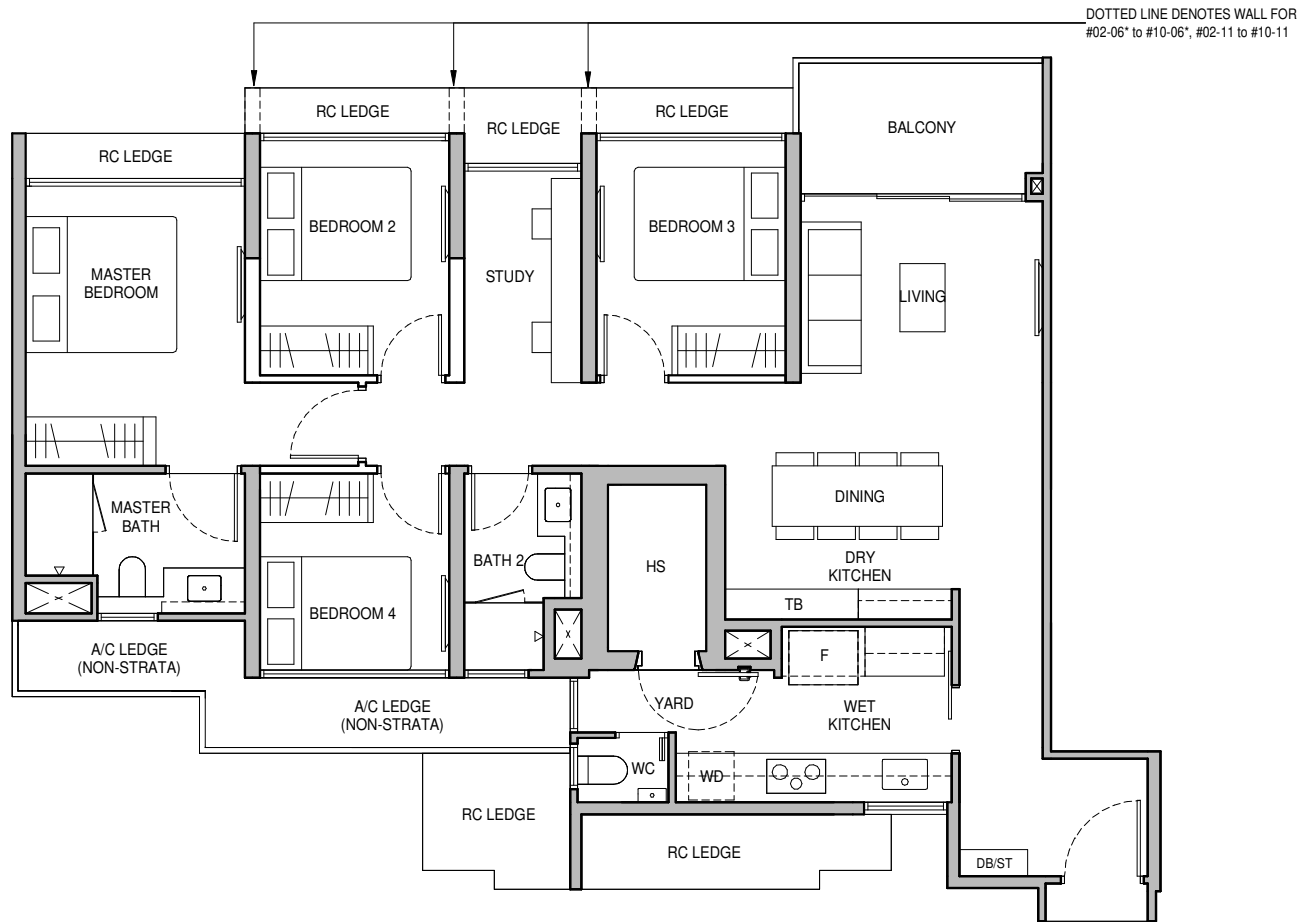
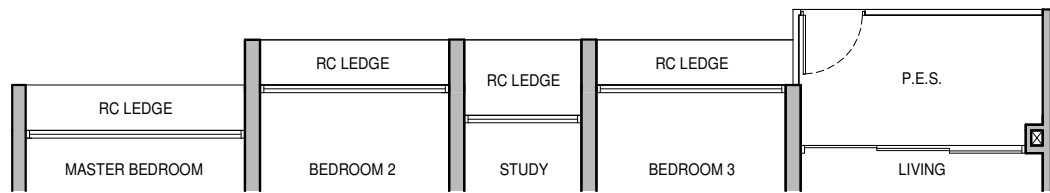
BLK 2 : #02-06\* to #11-06\*  
BLK 6 : #02-11 to #11-11

## Type D1S (P)

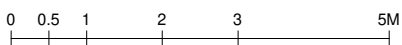
109 sq m / 1173 sq ft

BLK 2 : #01-06\*  
BLK 6 : #01-11

Type D1S (P)



- Wall not allowed to be hacked or altered
- TB Tall Boy
- Mirror Image
- P.E.S. - Private Enclosed Space
- WD - Washer Cum Dryer
- WC - Water Closet
- HS - Household Shelter
- DB/ST - Distribution Board/Storage
- RC - Reinforced Concrete
- F - Fridge
- A/C - Air-Conditioner



Area includes balcony and private enclosed space (PES) where applicable and excludes among others, the RC – Reinforced Concrete Ledge and A/C – Air Conditioner Ledge. The plans are subject to change as may be required by relevant authorities. All floor plans and areas are subject to final survey. The balcony shall not be enclosed unless with the approved balcony screen, more particularly illustrated under the header "Approved Balcony Screen". Please refer to the letter containing the Particulars, Documents and Information relating to the development and the unit for the floor plan relating to the unit you intend to purchase. The Sale and Purchase Agreement contains the entire agreement between the developer and the purchaser and supersedes and cancels in all respects all previous representations, warranties, promises, inducements or statements of intention, whether written or oral made by the developer and/or the developer's agent which are not embodied in the Sale and Purchase Agreement.



Keyplan is not drawn to scale

# 4-BEDROOM PREMIUM + STUDY

## Type D2PS

122 sq m / 1313 sq ft

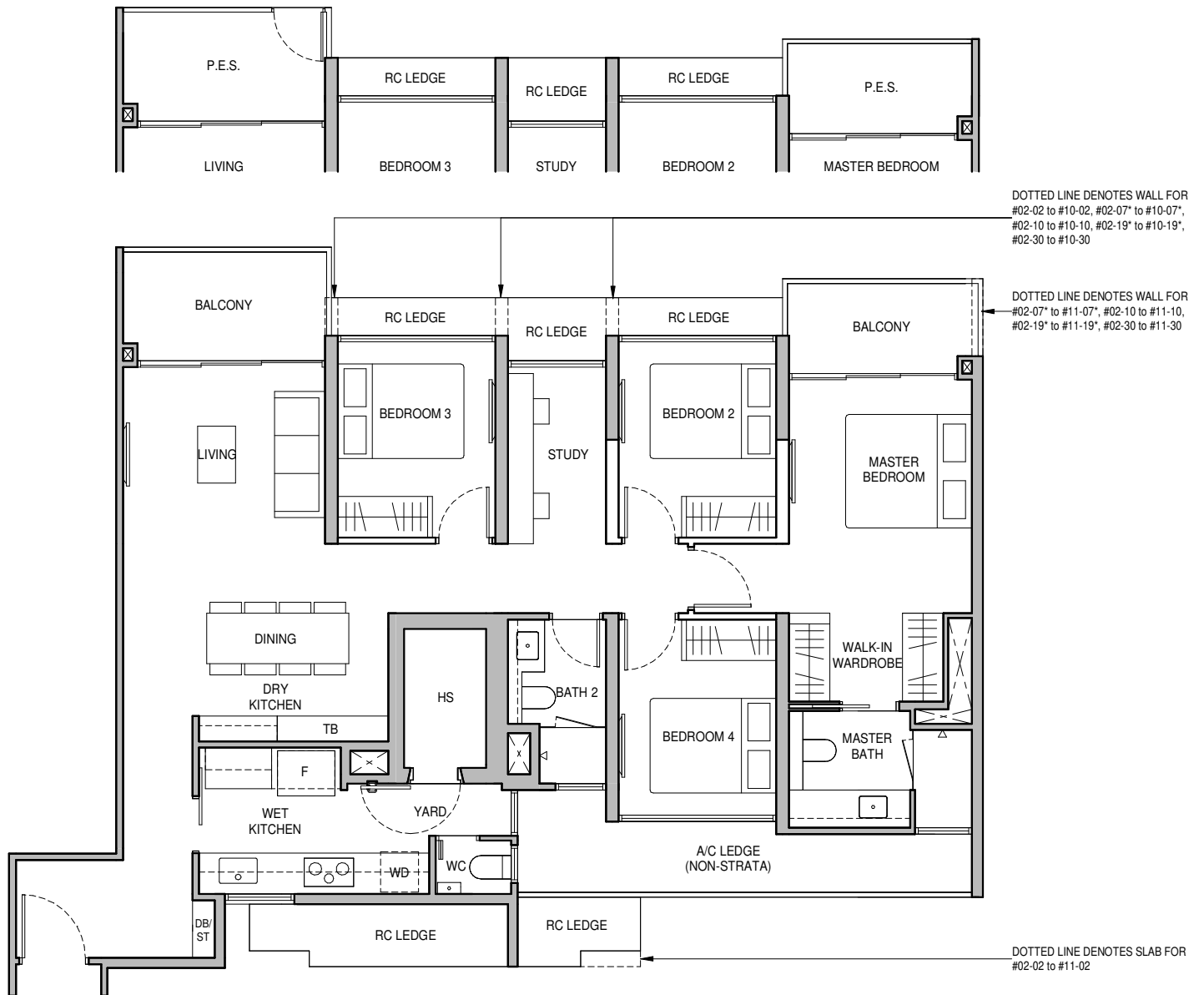
- BLK 2 : #02-02 to #11-02, #02-07\* to #11-07\*
- BLK 6 : #02-10 to #11-10
- BLK 8 : #02-19\* to #11-19\*
- BLK 10 : #02-30 to #11-30

## Type D2PS (P)

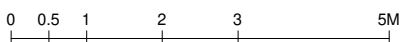
122 sq m / 1313 sq ft

- BLK 2 : #01-07\*
- BLK 6 : #01-10
- BLK 8 : #01-19\*
- BLK 10 : #01-30

Type D2PS (P)



- Wall not allowed to be hacked or altered
- TB Tall Boy
- Mirror Image
- P.E.S. - Private Enclosed Space
- WD - Washer Cum Dryer
- WC - Water Closet
- HS - Household Shelter
- DB/ST - Distribution Board/Storage
- RC - Reinforced Concrete
- F - Fridge
- A/C - Air-Conditioner



Area includes balcony and private enclosed space (PES) where applicable and excludes among others, the RC – Reinforced Concrete Ledge and A/C – Air Conditioner Ledge. The plans are subject to change as may be required by relevant authorities. All floor plans and areas are subject to final survey. The balcony shall not be enclosed unless with the approved balcony screen, more particularly illustrated under the header "Approved Balcony Screen". Please refer to the letter containing the Particulars, Documents and Information relating to the development and the unit for the floor plan relating to the unit you intend to purchase. The Sale and Purchase Agreement contains the entire agreement between the developer and the purchaser and supersedes and cancels in all respects all previous representations, warranties, promises, inducements or statements of intention, whether written or oral made by the developer and/or the developer's agent which are not embodied in the Sale and Purchase Agreement.



# 4-BEDROOM PREMIUM + STUDY

## Type D3PS

124 sq m / 1335 sq ft

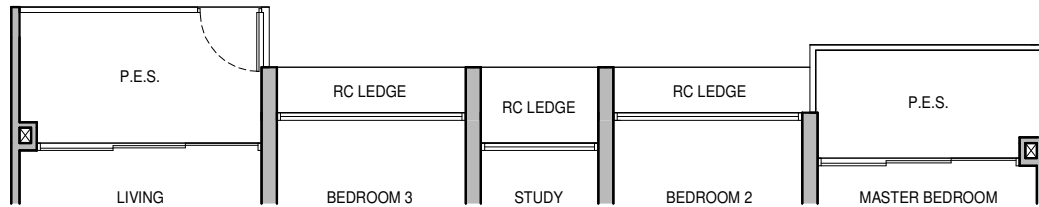
BLK 6 : #02-15\* to #11-15\*  
BLK 8 : #02-22 to #11-22

## Type D3PS (P)

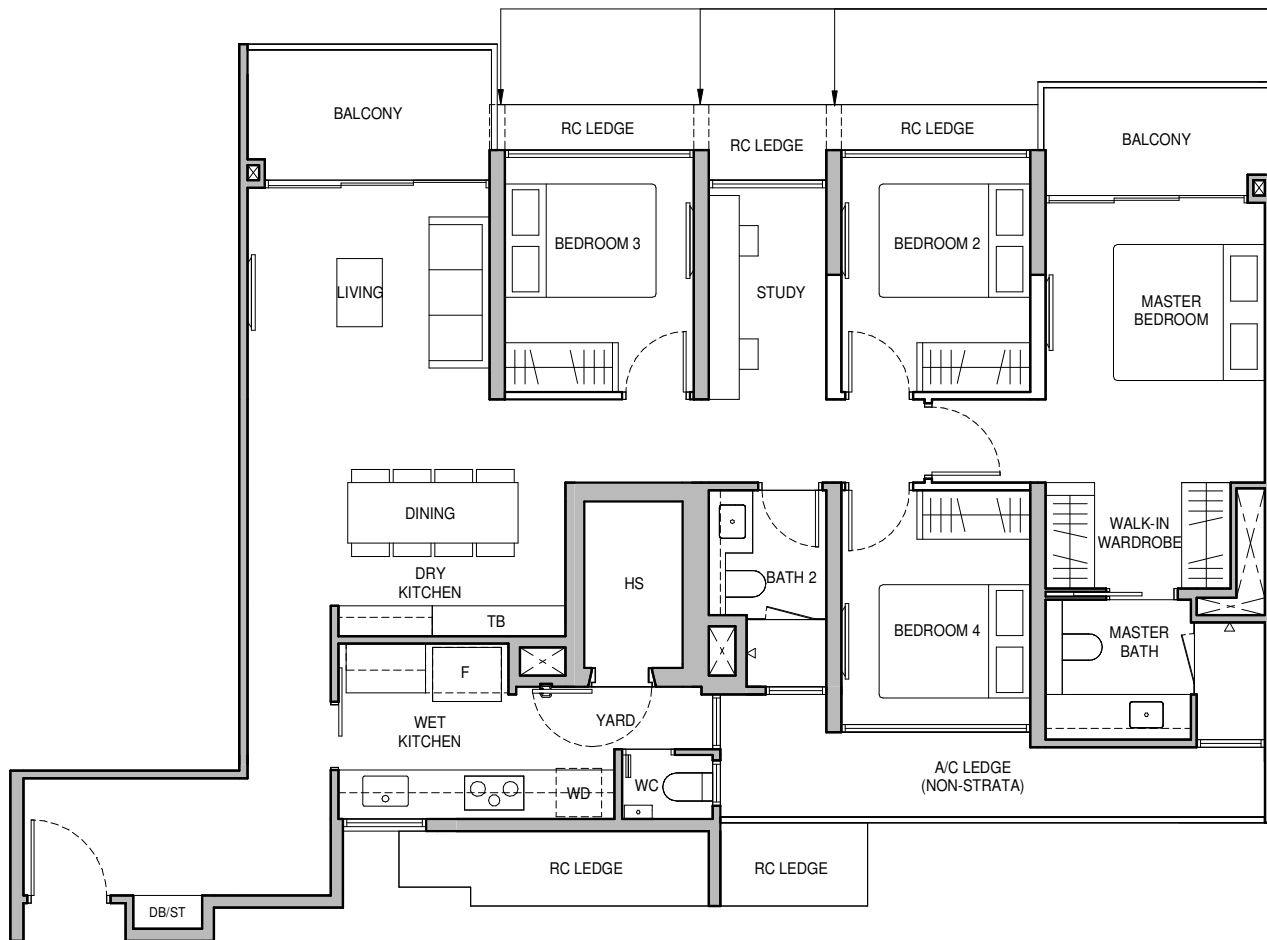
124 sq m / 1335 sq ft

BLK 6 : #01-15\*  
BLK 8 : #01-22

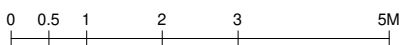
Type D3PS (P)



DOTTED LINE DENOTES WALL FOR #02-15\* to #10-15\*, #02-22 to #10-22



- Wall not allowed to be hacked or altered
- TB Tall Boy
- Mirror Image
- P.E.S. - Private Enclosed Space
- WD - Washer Cum Dryer
- WC - Water Closet
- HS - Household Shelter
- DB/ST - Distribution Board/Storage
- RC - Reinforced Concrete
- F - Fridge
- A/C - Air-Conditioner



Area includes balcony and private enclosed space (PES) where applicable and excludes among others, the RC – Reinforced Concrete Ledge and A/C – Air Conditioner Ledge. The plans are subject to change as may be required by relevant authorities. All floor plans and areas are subject to final survey. The balcony shall not be enclosed unless with the approved balcony screen, more particularly illustrated under the header "Approved Balcony Screen". Please refer to the letter containing the Particulars, Documents and Information relating to the development and the unit for the floor plan relating to the unit you intend to purchase. The Sale and Purchase Agreement contains the entire agreement between the developer and the purchaser and supersedes and cancels in all respects all previous representations, warranties, promises, inducements or statements of intention, whether written or oral made by the developer and/or the developer's agent which are not embodied in the Sale and Purchase Agreement.



Keyplan is not drawn to scale